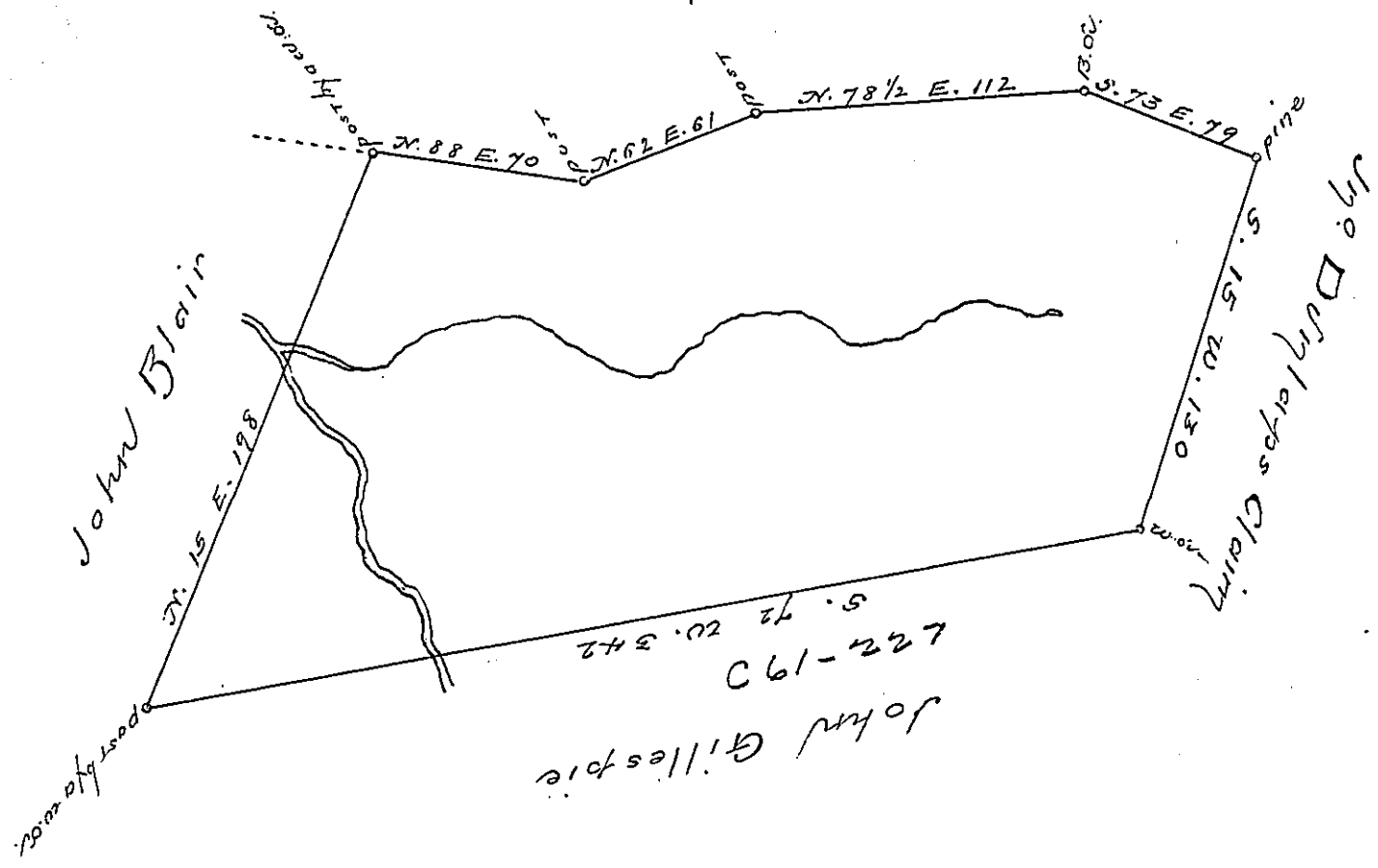


William Gillespy's Land



A Draught of a Tract of Land called Situate on a  
 Branch of Stone Run in Sandbath Township in Northumberland County,  
 Surveyed the 4<sup>th</sup> Day of July 1774 to George Gillespie in Pursuance of  
 his Application No. Dated the Day of  
 Containing Three Hundred & one Acres & allow<sup>ce</sup> of six P. Cent.  
 To John Lukens Esq. Chas. Lukens S.S.

Surveyor General  
 Part of this Land had been heretofore Surveyed by W<sup>m</sup>. Scull for the said Gillespie,  
 in Virtue of the above Order; but the Quantity not being compleat, and, as Gillespie alledged,  
 the Survey made without his consent, this Survey was made, which interferes with  
 prior Surveys, made upon Orders of a later date than Gillespie's.

Chas. Lukens

N.B. Application No. 3698 for 300<sup>ac</sup> dated August 3<sup>d</sup> 1769.

IN TESTIMONY that the above is a copy of the original remaining on file in the  
 Department of Internal Affairs of Pennsylvania, made conformably to an Act of Assembly approved the 16th day of  
 February, 1833, I have hereunto set my Hand and caused  
 the Seal of said Department to be affixed at Harrisburg, this

— second — day of — July — 1896.

*James Latta*  
 Secretary of Internal Affairs.